



**MEGUSA**  
Steel Construction



# Megusa



With over 35 years in the metallurgical sector, constant technical upgrading and continuous human adaptation, our Company (Megusa) has achieved a privileged level of quality, reliability and compliance in high-tech metal constructions.

The professionalism and experience of our technicians, the daily commitment of our workers, as well as the availability of facilities, machinery and highly qualified teams, allow us to present more than 2,000 references of works carried out, as a result of our customer loyalty and trust.

We present graphic documents of some special interventions in the sector which demonstrate both the level and experience acquired by our Company in this area, and the dynamism and adaptability of our workshops in carrying out difficult and complicated projects, complying with and respecting the requirements of strict controls and quality standards.

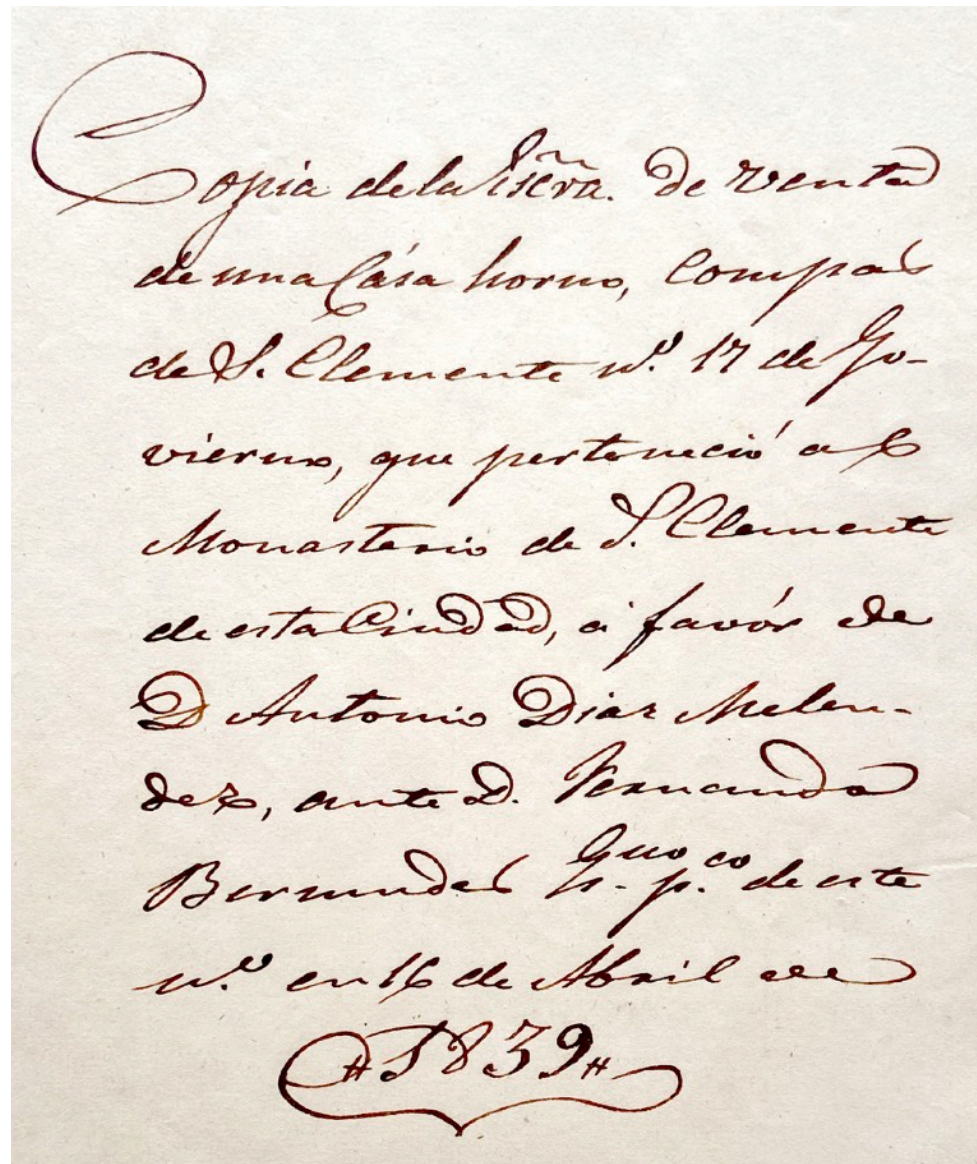


# Join venture



With more than 165 years' experience in the construction of Capital Goods, Civil Works and Large Machining, we have achieved a privileged place in the market.

Our production capacity, the wide and diverse means of manufacturing we have available, as well as the provision of our workshops, have allowed us to obtain from our clients multiple and important references that endorse our constructions.



The main success of all our interventions lies in the demands we set ourselves in terms of quality, respect for commitments made and meeting deadlines.

Technical offices with computerized studies, computer-aided design, monitoring and control of budgets together with a qualified technical team and highly specialized personnel, guarantee the completion of all types of boilerwork, welding, metal construction or heavy mechanical work entrusted to us.






# LOCATION & PRODUCTION CAPACITY



 Actual Location, Megusa Group

 Facilities next to Guadalquivir River

## EXPERIENCE IN BUILDING CODES

ASME/AWS, AD-MERKBLATTER, NBE-EA-95, UNE-EN/ CSA 59,13

## AUTOMATIC CUTTING

450 a 750 Tns/mes

## WELDING PROCEDURES

SAW, GMAW, FCAW, GTAW, STUD

## PRODUCTION CAPACITY

8000 Tns/año





# FACILITIES CAPACITY

## MEGUSA FACILITIES

Total area occupied.....	25.000m <sup>2</sup>
Total covered production area.....	4.600m <sup>2</sup>
Unfilled production area.....	10.000m <sup>2</sup>
Buildings, offices and personnel.....	300m <sup>2</sup>
Total area under cranes.....	18.960m <sup>2</sup>

## SAN CLEMENTE FACILITIES

Total area occupied.....	4.300m <sup>2</sup>
Total covered production area.....	3.000m <sup>2</sup>
Total area under cranes.....	3.000m <sup>2</sup>

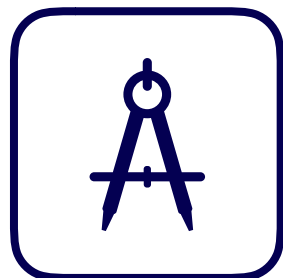




# HUMAN RESOURCES



MANAGEMENT  
STAFF  
**2**



TECHNICAL  
OFFICE  
**7**



WORK SHOP  
MANAGER  
**2**



QUALITY  
**2**



COMMERCIAL  
**3**



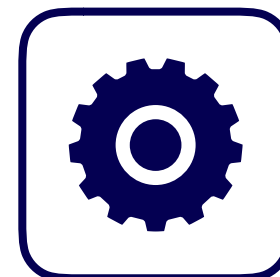
ADMINISTRATION  
**5**



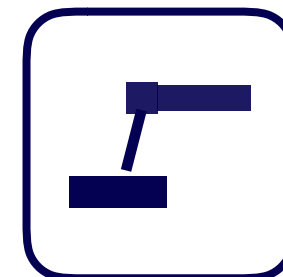
PURCHASING  
DEPARTMENT  
**2**



TRANSPORTATION  
**1**



MAINTENANCE  
**2**



WELDERS,  
BOILERMAKERS,  
FITTERS...

**59**



# LIFTING GEAR

## Overhead Travelling Cranes

DENOMINATION	UNIT	LIFTING CAPACITY	LIFTING HEIGHT
Single Gider Crane (Jaso)	2	20 Tons	12 mts
Single Gider Crane (GH)	1	6+6 Tons	12 mts
Cranes	4	5 Tons	7 mts

## Cranes in Assembly Area

DENOMINATION	UNIT	LIFTING CAPACITY	WIDTH	LIFTING HEIGHT
LAURACK Cranes with 2 lift truck	1	30+30 Tons/ carro	30 mts	12 mts
Cranes GH	1	32 Tons	30 mts	16 mts
Cranes GH	2	32 Tons	20 mts	10 mts
Cranes GH	1	10 Tons	20 mts	10 mts
Pneumatic Cranes with infinitive rout	1	100 Tons		8,2 mts



# LIFTING GEAR

## Cranes in Store Area

DENOMINATION	UNIT	LIFTING CAPACITY	WIDTH	LIFTING HEIGHT	CANTILEVER
LAURACK	1	12 Tons	14 mts	10 mts	4 mts
ELECTROMAGNETIC	1	12 Tons			





# CUTTING MACHINES



## PLASMA CUTTING

Computer Numerical control (CNC)  
Swivel torch Cutting dimensión 28mts x 8mts  
Bevelling from 8 to 35mm  
Maximum Thickness from 40mm  
CNC machines



## GAS CUTTING

4 torches  
Cutting dimension 28mts x 8mts  
Cutting Thickness from 5 to 250mm  
CNC machines



## GAS CUTTING

2 Torches  
Cutting dimensión 14mts x 3,5mts  
Cnc machines  
Cutting thickness from 5 to 300mm

**4 TANAKAS for Bevelling**  
**1 Cutting Vertical Machine**



# MACHINERIES

- Casanova brand bending cylinder, with a bending width of 3 meters and a maximum thickness of 25 mm.
- Casanova brand curved cylinder, with a bending width of 2.5 meters and a maximum thickness of 12 mm.
- Sheet metal shear
- Punching machines



- Parallel lathes between points 5,500 turning 1,600 mm.
- Vertical lathes 2,500 height 2,000 mm.
- Flag drills bit 100 arm 2,500 mm.
- Universal milling machine.
- Boring mills: Unión Gera 160, mobile column.
  - Longitudinal shift: 8,000mm
  - Side shift: 3,200mm
  - Vertical shift: 4.9 meters high
  - Optical readers and 8,000 x 4,000mm band
- Boring machines: Unión Gera 110, mobile column.
  - Longitudinal shift: 10,000mm
  - Side shift: 1,600mm
  - Vertical shift: 2 meters high
  - Optical readers and 12,000 x 4,000mm band



## WELDING EQUIPMENT

- 5 ESAB A6 submerged arc machines with double transformation for tandem with 2 wires of Ø4.8 mm
- 3 ESAB A2 submerged arc machines for Ø4mm wire
- 1 ESAB welding column with A6 single transformer machine.
- 4 GMAW Welding Tractor
- INVERTER semi-automatic welding equipment
- Semi-automatic welding equipment
- 3 Arco air equipment





# QUALITY CERTIFICATE

We are certified according to the most important standards, but we are willing and able to adapt to the requirements of each project so as to guarantee their quality and ensure the confidence placed in us by our clients.



ISO 9001:2015

ISO 14001:2015

Marcado CE EN-1090-2:2019

CSA W 47.1

NHSS 20



# WORKS

**SINGULAR STRUCTURES**



**CABLE-STAYED BRIDGE**



**TWIN GIRDER CROSS-SECTION**



**HIGHT SPEED VIADUCTS**



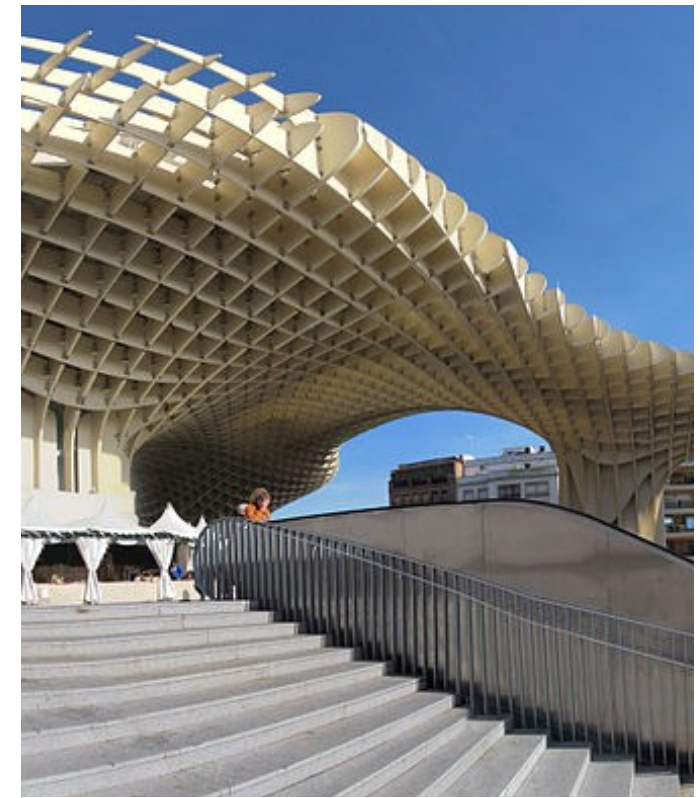
**PEDESTRIAN BRIDGES**



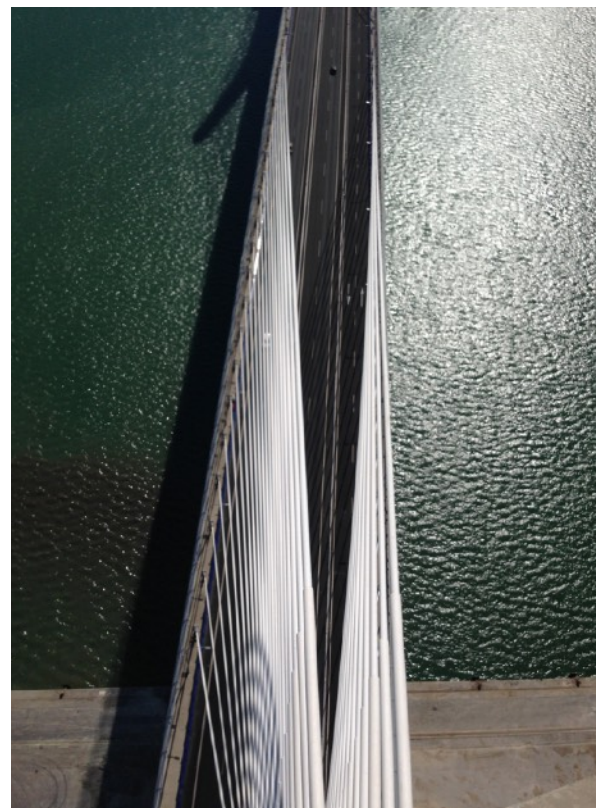
**EQUIPMENT GOODS**













# TWIN GIRDER CROSS-SECTION

# WORKS





# WORKS

## HIGHT SPEED VIADUCTS





# PEDESTRIAN BRIDGES

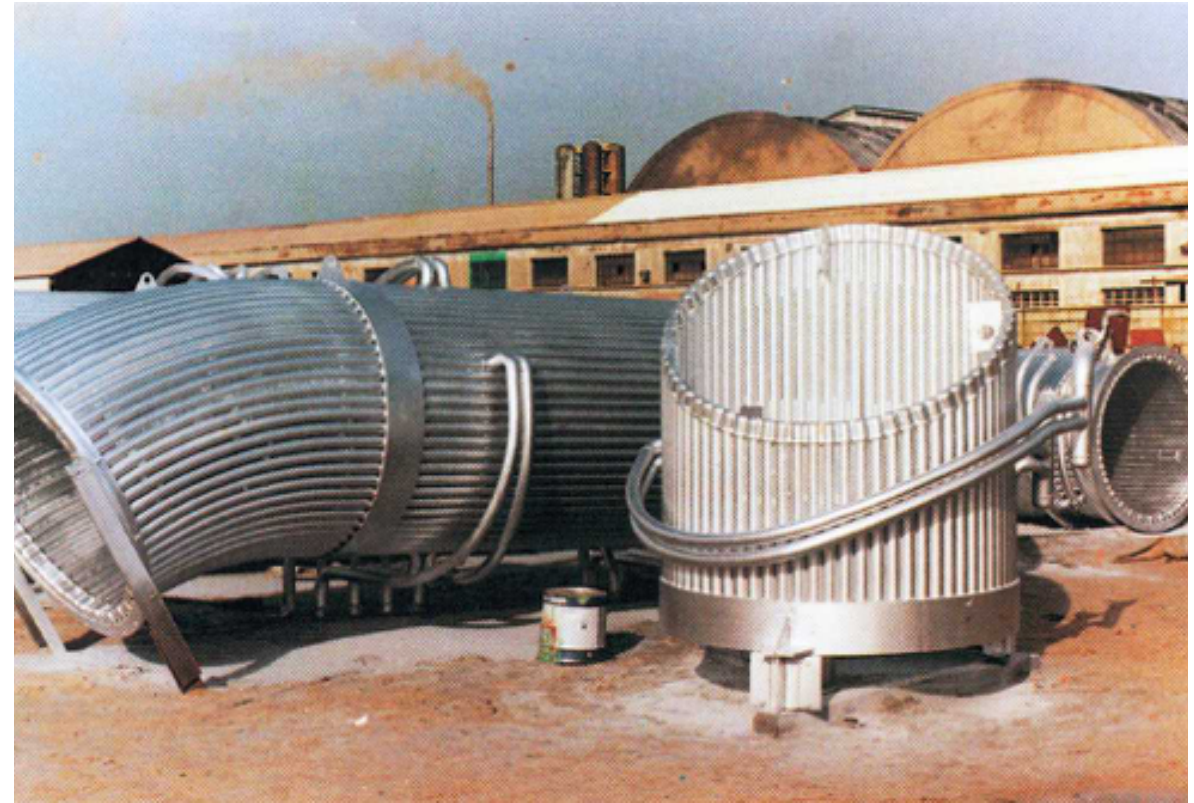
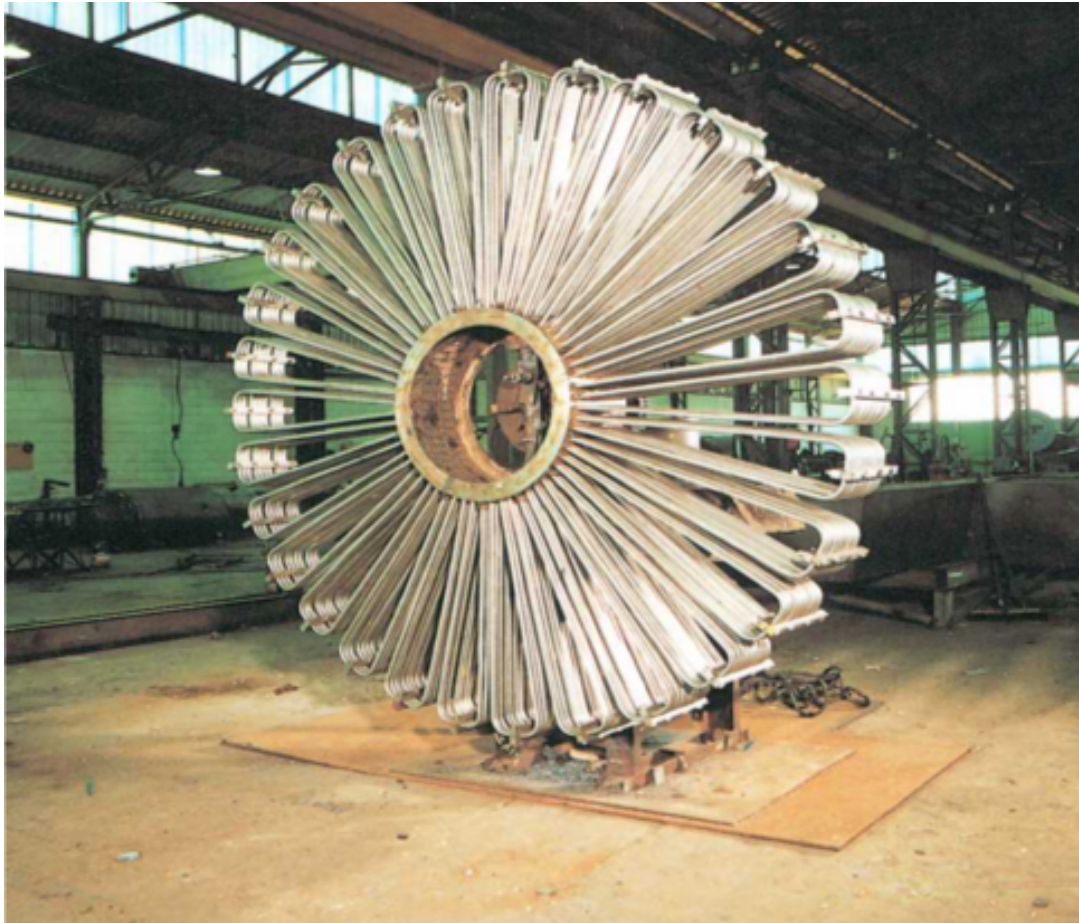
## WORKS





# WORKS

# EQUIPMENT GOODS







# MEGUSA GROUP

## MEGUSA GROUP

**METALURGIA DEL GUADALQUIVIR, S.L.**  
**FÁBRICA SAN CLEMENTE, S.A**

CIF: B-41059031

Adress: Carretera de la Esclusa s/n 41.011 Sevilla

Phone: +34 954 452 800

Fax: +34 954 452 277

Web: [www.megusa.com](http://www.megusa.com)

Mail: [tecnica@megusa.com](mailto:tecnica@megusa.com)

### Contact

D. Miguel Silvestre Martínez